
MOVEit Mobile Server Installation Guide



Copyright

©1991-2014 Ipswitch, Inc. All rights reserved.

This document, as well as the software described in it, is furnished under license and may be used or copied only in accordance with the terms of such license. Except as permitted by such license, no part of this publication may be reproduced, photocopied, stored on a retrieval system, or transmitted, in any form or by any means, electronic, mechanical, recording, or otherwise, without the express prior written consent of Ipswitch, Inc.

The content of this document is furnished for informational use only, is subject to change without notice, and should not be construed as a commitment by Ipswitch, Inc. While every effort has been made to assure the accuracy of the information contained herein, Ipswitch, Inc. assumes no responsibility for errors or omissions. Ipswitch, Inc., also assumes no liability for damages resulting from the use of the information contained in this document.

WS_FTP, the WS_FTP logos, Ipswitch, and the Ipswitch logo, MOVEit and the MOVEit logo, MessageWay and the MessageWay logo are trademarks of Ipswitch, Inc. Other products and their brands or company names, are or may be trademarks or registered trademarks, and are the property of their respective companies.

This document was published on Thursday, July 10, 2014 at 09:12.

Contents

Install MOVEit Mobile	1
Upgrade MOVEit Mobile	9
Repair MOVEit Mobile	11
Remove MOVEit Mobile	13
Silent Install	15
Configuration File Settings	17

Install MOVEit Mobile

The installation program installs the MOVEit Mobile server and its services. Use it on the same computer that runs MOVEit DMZ.

Note: The program detects whether or not MOVEit is present on the computer, and whether or not MOVEit Mobile is present. If MOVEit is not present, you are told to install it first. If MOVEit Mobile is present, the wizard offers to repair or remove MOVEit Mobile.

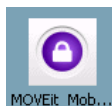
Supported operating systems for MOVEit DMZ and MOVEit Mobile server are:

- Windows 2008 Server
- Windows 2008 Server R2
- Windows 2012 Server

The installation program presents a wizard to step you through the process.

➤ **To install MOVEit Mobile:**

1. Run the MOVEit_Mobile .exe file to launch the wizard.

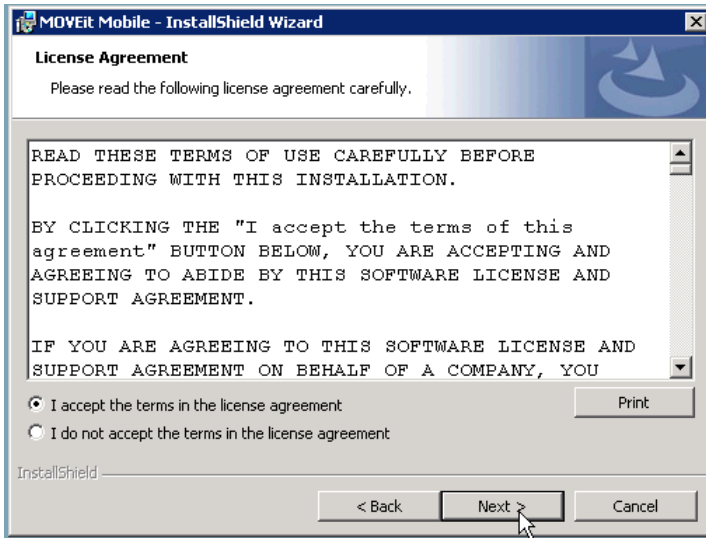


After preparing for installation, the wizard welcomes you and says it will perform a fresh installation.



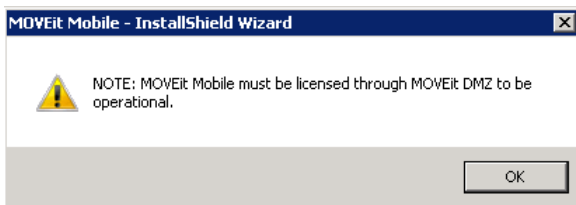
2. Click Next to continue (or Cancel to quit).

The License Agreement is displayed in a scrolling pane for you to read.



3. Choose "I Accept the Terms of License Agreement" to be able to proceed.
4. Click Next to continue.
(Other options are Print, Back, and Cancel.)

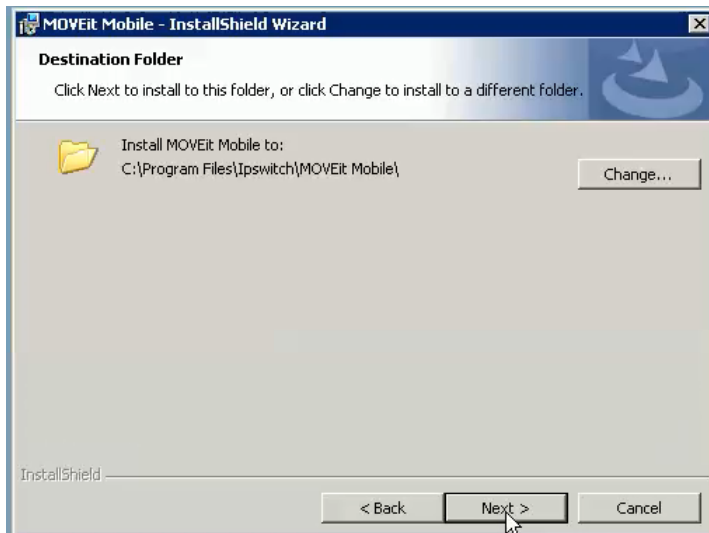
You receive a pop-up telling you that MOVEit mobile must be licensed through MOVEit DMZ in order to be operational.



Note: If you do not have the mobile licensing, the install will proceed, but the mobile server will not function until you add the licensing to MOVEit DMZ.

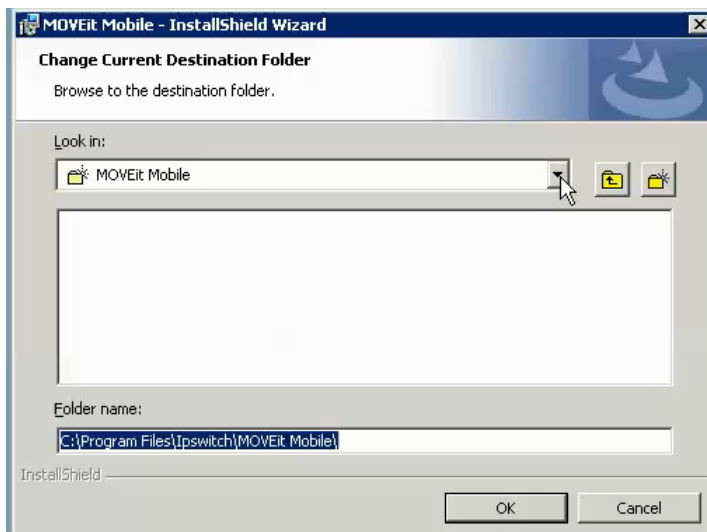
5. Click OK in the pop-up.

The destination folder is displayed.



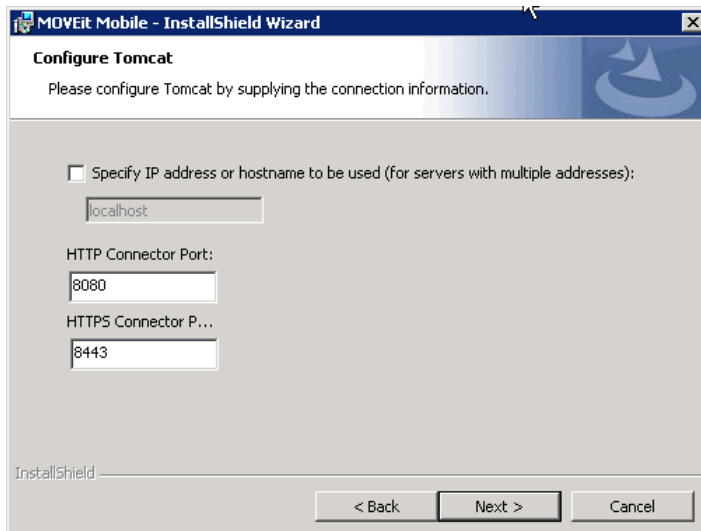
6. Click **Next** to install to the default folder.

Alternatively, click **Change** to select a different folder. The **Change Current Destination Folder** dialog opens.

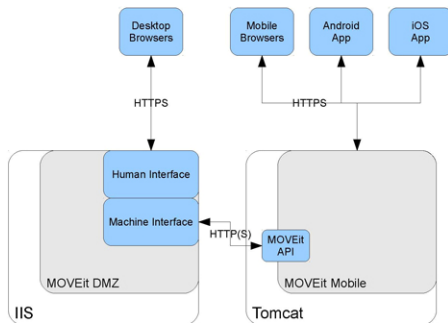


7. In the **Change Current Destination Folder** dialog, browse to the destination folder and click **OK**. (Then, back in the **Destination Folder** dialog, click **Next**.)

The default Tomcat connection information is displayed.



This is the information for the connection between the mobile clients and Tomcat (mobile server), as shown in the following diagram. The information consists of the HTTP port, the HTTPS port, and (optionally) the IP address or hostname.



8. If the server has more than one address associated with it, specify which IP address or hostname to use. (For example, you might want a distinct web domain for mobile.)

Note: If you specify hostname or IP address, you will have to later configure the **Mobile URL** accordingly, during system configuration.

Note: You can use the default port numbers unless they are already being used. The wizard checks that for you after you click **Next**.

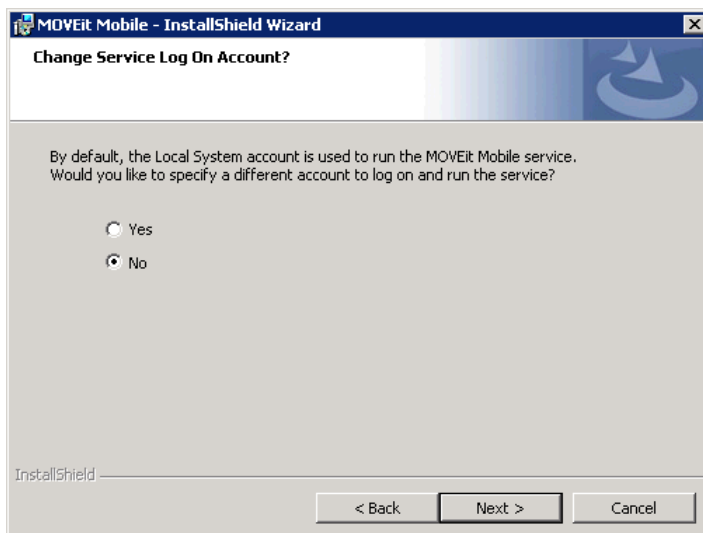
9. Click **Next**.

If a port number is already in use, a pop-up tells you. Click **OK**. Then enter a new port number and click **Next**.

Note: If you change the port numbers, you will have to later configure the **Mobile URL** accordingly, during system configuration.

Note: Whether or not you change the port numbers, you will have to later enable the mobile ports in the firewall.

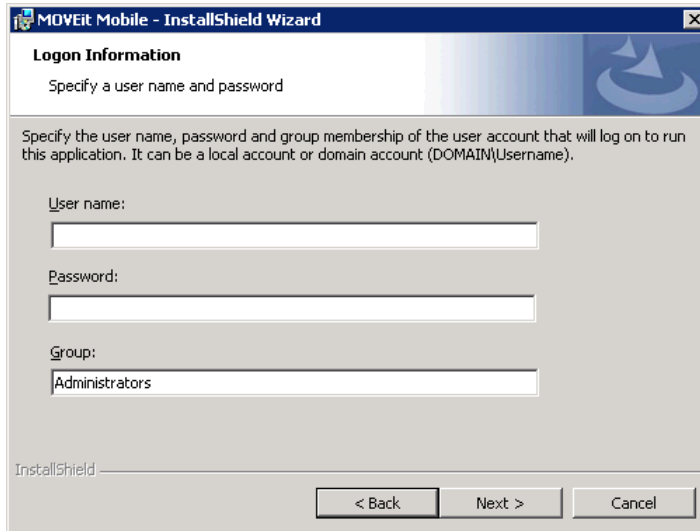
A prompt about changing the log on account for the mobile service is displayed. This is the account that will run the Tomcat service. By default, this is set to the local system account.



10. Click **Next** (default is No) to use the default account "Local System".

Alternatively, click **Yes** to specify a different log on account. The **Logon Information** dialog opens.

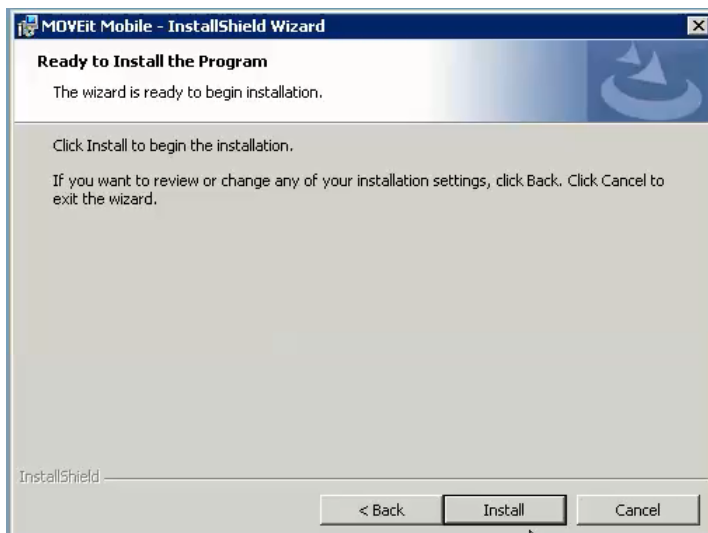
Note: The account must already exist, must have the "Log on as a service" right (see [http://technet.microsoft.com/en-us/library/cc739424\(v=ws.10\).aspx](http://technet.microsoft.com/en-us/library/cc739424(v=ws.10).aspx) [http://technet.microsoft.com/en-us/library/cc739424\(v=ws.10\).aspx](http://technet.microsoft.com/en-us/library/cc739424(v=ws.10).aspx)), and must be in a group that has full permissions to the installation directory.



11. In the **Logon Information** dialog, enter the **User name** and **Password** and optionally, **Group**, then click **Next**.

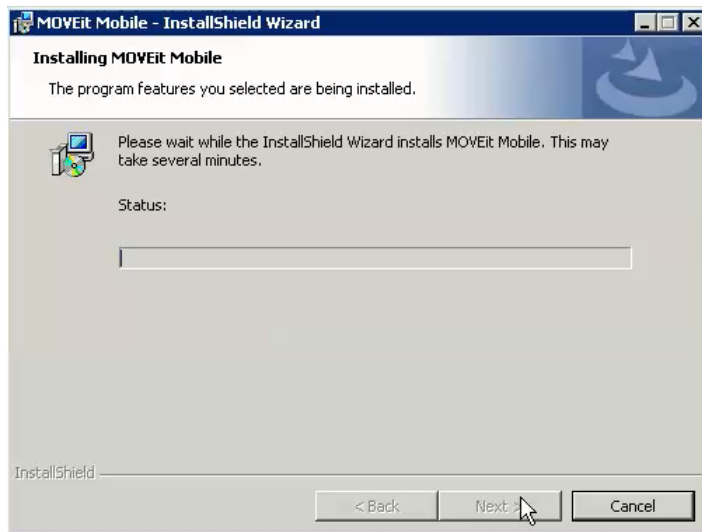
Group shows the user group that the user is in. The group is used to lock down the tomcat\conf directory. The default entry is the Administrators group. If the user is not already a member, the install program adds the user to the group. Best practice is to have the service user in a group with fewer permissions than Administrators.

The wizard is ready to install with the options you have selected.



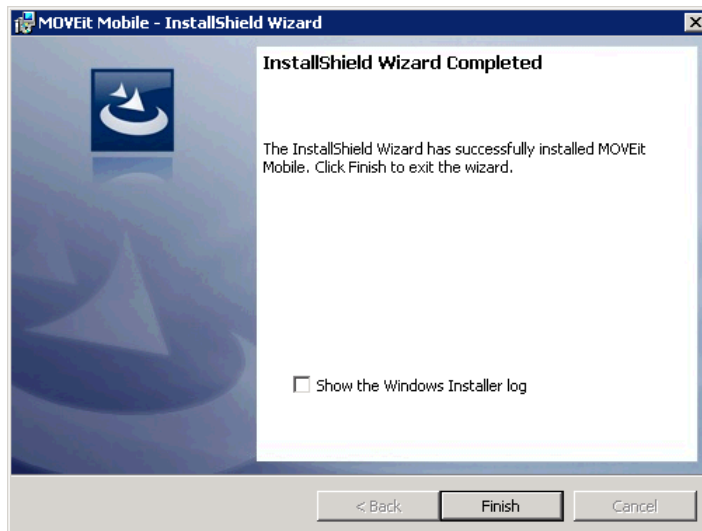
12. To review and possibly change your choices, click **Back**.
Otherwise, click **Install** to install.

While the installation proceeds, you will see this status dialog.



13. When installation completes, click Next.

After the installation has completed, the last dialog opens.



You can select the **Show the Windows Installer log** option to display the log, which can be used to diagnose install problems and/or attach to a Support issue.

14. Click Finish.

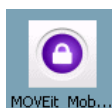
Upgrade MOVEit Mobile

Running the MOVEit_Mobile .exe installation program detects if MOVEit Mobile is present. If the version is newer than the installed version, The wizard opens and offers to upgrade.

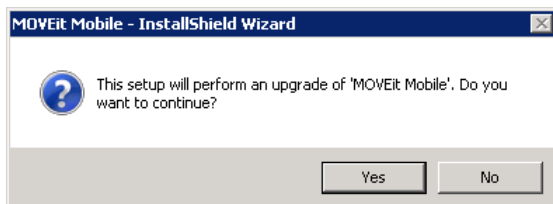
Note: When you upgrade the MOVEit Mobile Server installation, all associated XML files are upgraded, with the exception of server.xml. For example, the moveit-beans.xml file (C:\Program Files(x86)\Ipswitch\MOVEit Mobile\Tomcat\webapps\mobile\WEB-INF\classes\spring\moveit-beans.xml) will be overwritten with a new file. The upgrade install will create backups of the current XML files and ask if you want to save the backup files. If you made changes to one of these files, you will have to manually add those changes to the new file.

➤ *To upgrade MOVEit Mobile:*

1. Run the MOVEit_Mobile .exe file to launch the wizard.

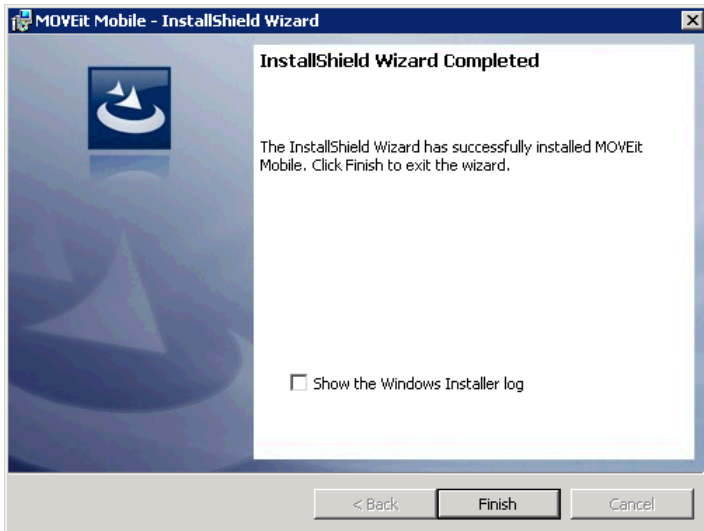


You receive a pop-up telling you that the program will perform an upgrade installation.



2. Click **Yes** to continue the install.
While the installation proceeds, you will see a status dialog.
3. When the installation completes, click **Next**.

After the installation has completed, the last dialog opens.



You can select the **Show the Windows Installer log** option to display the log, which can be used to diagnose install problems and/or attach to a Support issue.

4. Click **Finish**.

Repair MOVEit Mobile

The recommended way to repair MOVEit Mobile is to use the Windows Control Panel.

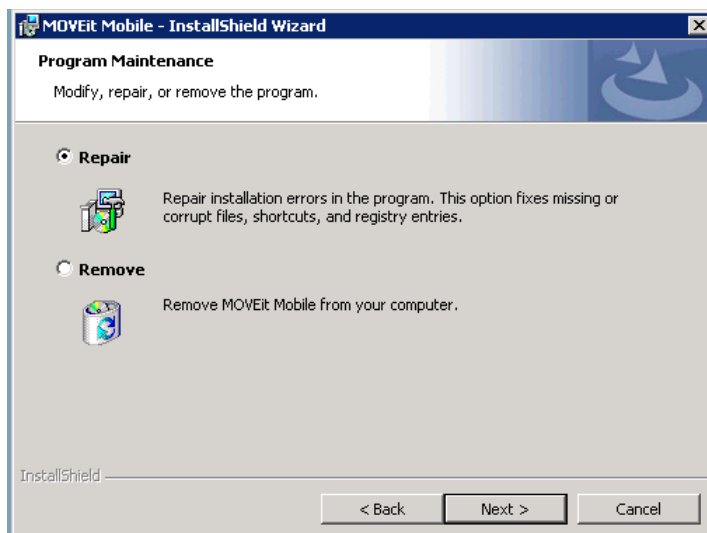
Note: Alternatively, running the MOVEit_Mobile .exe installation program detects if MOVEit Mobile is present. The wizard opens and offers to upgrade (if the version is newer than the installed version), repair or remove (if the version is the same as installed version) MOVEit Mobile. Selecting **Repair** will repair MOVEit Mobile.

Note: To upgrade, see the *Upgrade* (on page 9) section.

➤ **To repair MOVEit Mobile:**

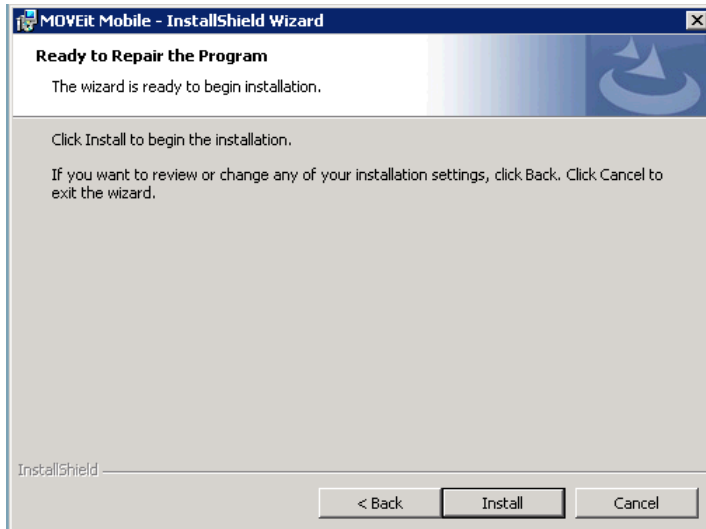
1. Open the Windows Control Panel, Programs and Features.
2. In the list of installed programs, right-click **MOVEit Mobile** and select **Change**.

The MOVEit Mobile wizard opens. After preparing for installation, and detecting that a version of the MOVEit Mobile server is present on the computer, the wizard welcomes you and prompts to repair or remove MOVEit Mobile server.



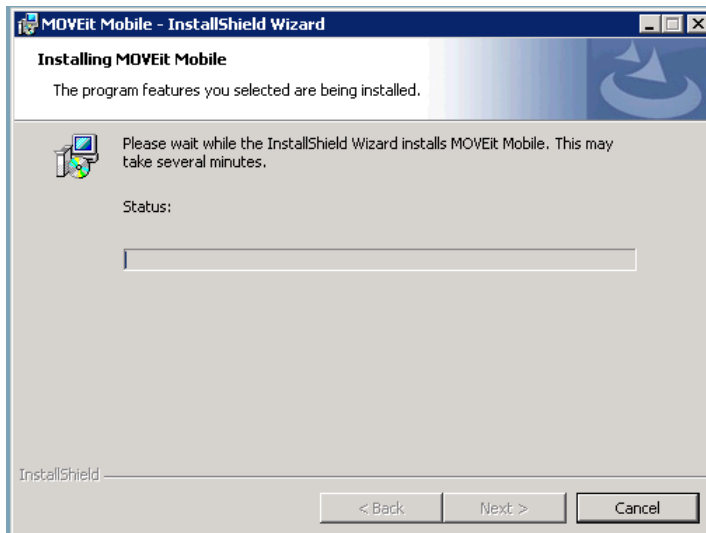
3. Select **Repair**.
4. Click **Next**.

The wizard says it is ready to begin repairing the program.



5. Click **Install** to continue (or **Cancel** to quit).

The software to repair MOVEit Mobile is installed.



6. When the repair completes, click **Finish**.

Remove MOVEit Mobile

Remove MOVEit Mobile is to using the Windows Control Panel.

Note: Alternatively, running the MOVEit_Mobile .exe installation program detects if MOVEit Mobile is present. The wizard opens and offers to upgrade (if the version is newer than the installed version), repair or remove (if the version is the same as installed version) MOVEit Mobile. Selecting **Remove** will uninstall MOVEit Mobile.

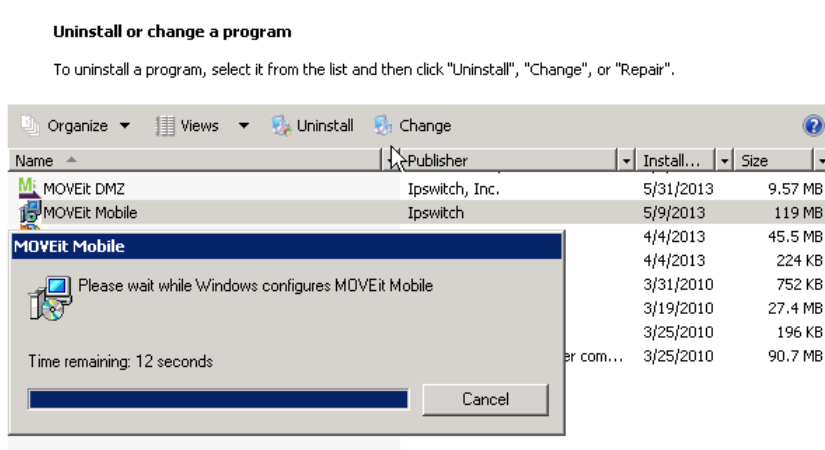
Note: To upgrade, see the *Upgrade* (on page 9) section.

The following procedure removes the MOVEit Mobile server and its services from the computer.

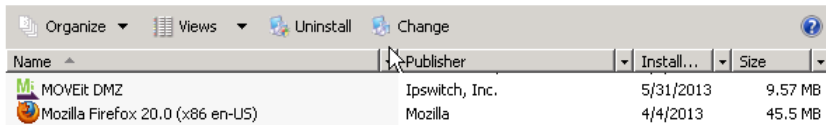
➤ **To remove MOVEit Mobile:**

1. Open the Windows Control Panel, Programs and Features.
2. In the list of installed programs, right-click **MOVEit Mobile** and select **Uninstall**.
3. In the Programs and Features dialog box, click **Yes** to confirm that you are sure want to uninstall MOVEit Mobile.

The MOVEit Mobile dialog is displayed while MOVEit Mobile is removed from the computer.



When the removal is complete, the dialog goes away and the MOVEit Mobile server is removed from the list of programs.



A screenshot of the Windows 'Programs and Features' control panel window. The window title bar includes 'Organize', 'Views', 'Uninstall', and 'Change' buttons. The main content area is a table with columns for Name, Publisher, Install..., and Size. Two programs are listed: 'MOVEit DMZ' by Ipswitch, Inc. (installed 5/31/2013, 9.57 MB) and 'Mozilla Firefox 20.0 (x86 en-US)' by Mozilla (installed 4/4/2013, 45.5 MB).

Name	Publisher	Install...	Size
MOVEit DMZ	Ipswitch, Inc.	5/31/2013	9.57 MB
Mozilla Firefox 20.0 (x86 en-US)	Mozilla	4/4/2013	45.5 MB

Silent Install

To automate installation of the MOVEit Mobile Server, you can use silent install. The silent, or unattended, install allows the server to be installed without user interaction. This is accomplished using an install command plus parameters to start the installation.

As with the regular interactive MOVEit Mobile Server installation, the silent install will install, upgrade, or repair the MOVEit Mobile Server, depending on the condition of the existing system.

The requirements are the same as for the interactive install.

Use this syntax to run the installer:

```
MOVEit_Mobile.exe /s /v"/qn PROPERTY=VALUE"
```

/s - use silent install method

/v"/qn PROPERTY=VALUE" - use the property and value entered. See the table for a description of each property.

For example, the following command installs the MOVEit Mobile Server to host named "moveittest.domain.com" and sets up the default ports for HTTP (8080) and HTTPS (8443). You do not need to enter the port properties unless you want to change the default values.

```
MOVEIT_Mobile.exe /s /v"/qn TOMCAT_HOST=moveittest.domain.com"
```

Property	Description
TOMCAT_HOST	The IP address or host name for the server where MOVEit Mobile is installed.
TOMCAT_HTTP_CONNECTOR_PORT	The default HTTP port is 8080. Use this property to change the port used to connect to Tomcat (mobile server).
TOMCAT_HTTPS_CONNECTOR_PORT	The default HTTPS port is 8443. Use this property to change the port used to connect to Tomcat (mobile server).
CHANGESERVICEUSER	By default, the Local System account is used to run the MOVEit Mobile service. To specify a different Windows account, set this property equal to zero (CHANGESERVICEUSER="0"), then provide the account information in the username and password properties described below.

Property	Description
IS_NET_API_LOGON_USERNAME	Set this to a Windows account username. The account must already exist, must have the "Log on as a service" right, and must be in the Administrators group for full permissions to the installation directory.
IS_NET_API_LOGON_PASSWORD	Set this to the password associated with the username set in the IS_NET_API_LOGON_USERNAME property.
IS_NET_API_LOGON_GROUP	Set this to the user group that the user is in. The group is used to lock down the tomcat\conf directory. The default entry is the Administrators group. If the user is not already a member, the install program adds the user to the group. Best practice is to have the service user in a group with fewer permissions than Administrators.
INSTALLDIR	The default install directory is: C:\ Use this property if you want to set a custom install directory. For example, you can set the install dir as follows: /v"/qn INSTALLDIR=C:\InstallPath"

Note: Silent install logs will be in Users\<<user>\Appdata\Local\Temp\ (or sometimes .\Temp\1) with a name that starts with MSI.

Note: Silent upgrade will require you to set the properties for service user and password.

Configuration File Settings

Configuration settings for the MOVEit Mobile Server installation can be found here:

```
C:\Program Files(x86)\Ipswitch\MOVEit Mobile\Tomcat\webapps\
mobile\WEB-INF\classes\spring\moveit-beans.xml
```

Note: When you upgrade the MOVEit Mobile Server installation, the moveit-beans.xml file will be overwritten with the new file. The upgrade install will create a backup of the current file and ask if you want to save the backup. If you made changes to this file, you will have to manually add those changes to the new moveit-beans.xml file.

In most cases, the default values work well. App settings that you may want to modify include:

Setting	Description
uploadCompressionEnabled	Set uploadCompressionEnabled = true for using server to server compression while uploading; otherwise, set to false.
downloadCompressionEnabled	Set downloadCompressionEnabled = true for using server to server compression while downloading false; otherwise, set to false.
packageAutoSaveIntervalMs	Sets how often a draft package is saved. The default setting is 150 seconds. This applies to a package that the user is editing but has not yet sent or saved.